








## Decline V2.05

### Release Notes

15<sup>th</sup> February 2024



#### **Version Highlights**

-  Added support for the new Surpac DSLS licensing system
-  Administration privileges no longer needed for licensing functions
-  64 bit compatibility! *Decline* will run under the dedicated 64 bit version of *Surpac* running on 64 bit *MS Windows*.
-  The *Decline* installer has been re-written to cater for both 32 and 64 bit versions of *Surpac*. Computer registry entries are no longer created to assist with compatibility in restricted computing environments.
- Rounding errors in *Point to Point Curve* have been fixed.
- Specified Path* could sometimes halt *Surpac*, this issue has been rectified.
- The *Edit Decline Path* function has been overhauled and is now far more robust when deciphering an existing decline.
- Configuration and default files are now stored into the Custom directory.
- Ability to use a share point directory with *Decline* has been implemented
-  A new *Decline* toolbar has been created to run the various decline design tools.



## Important Note on Surpac 64 Bit Compatibly

Please note that *Decline V2.03* and all previous versions **will not function** on the 64 bit versions of *Surpac*.

*Decline V2.05* is now **compatible with 64 bit versions of Surpac**. Note that both 32 bit versions and 64 bit versions of *Surpac* with *Decline* can coexist on the same computer.



## New Installer

The installation program for *Decline* has been re-written to solve a number of issues. It now correctly detects all versions of *Surpac* including 64 bit installations.

The previous installer wrote a key into the computers registry which generally required computer administrator privileges. This no longer happens making the program easier to deploy in a restricted environment. A normal user should be able to run the installer.

The installer contains all files for both 32 bit and 64 bit versions of *Surpac*, separate installers are not required.



## Recommendations

The following versions of *Surpac* have been tested with *Decline* and appear to be stable;

- Surpac V6.9+
- Surpac 2019 (V7.0+)
- Surpac 2020 (V7.2+)
- Surpac 2020 (V7.3+)
- Surpac 2021 (V7.4+)
- Surpac 2022 (V7.5+)
- Surpac 2023 (V7.6+)

It is recommended to gain the full benefit of *Decline V2.05* that you use *Surpac V6.9* or better



## Version Details

Support for the new *Dessault Systemes* Licensing Systems (DSLS) has been implemented. This will operate in the same way as the sentinel system where an 8 character hexadecimal code is used to identify your *Surpac* license. The *FlexiSurv* license key is then associated with this ID.

Computer administrator privileges are no longer required to register your license tokens eliminating the need for IT to be involved.

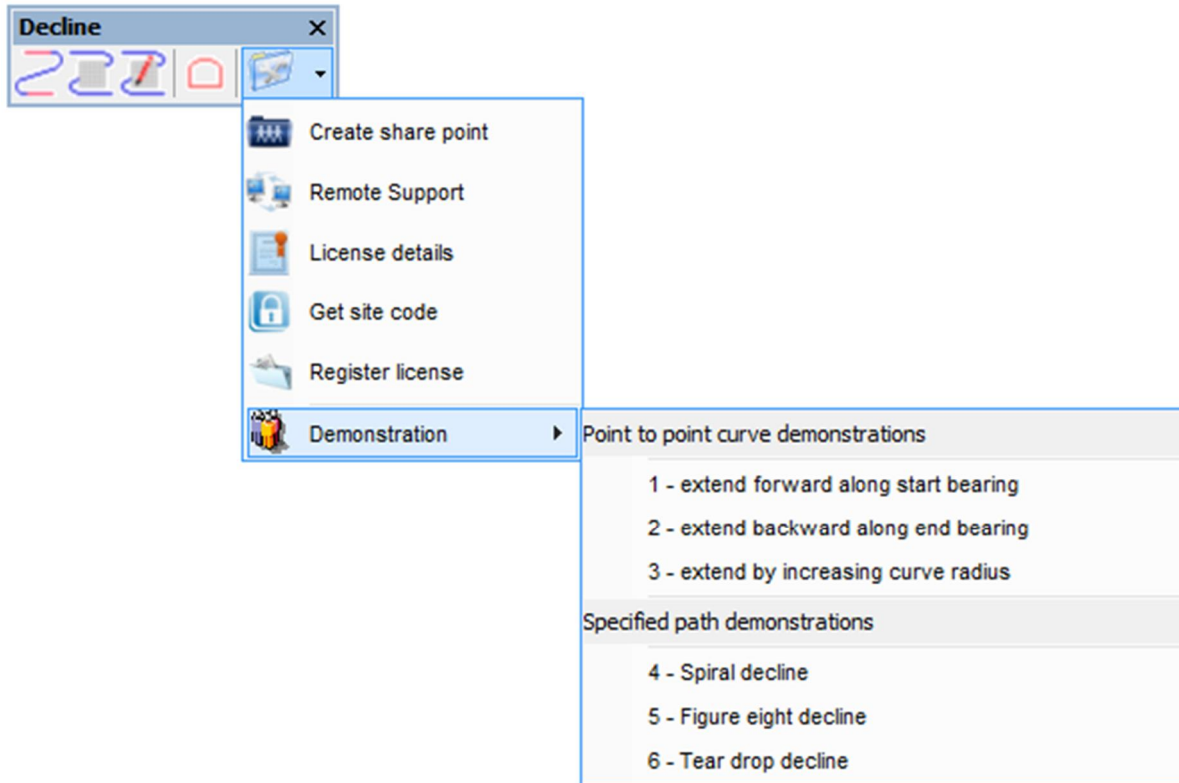
To bring *Decline* in line with other *Mine Solutions* products all custom files are now stored into the Custom directory beneath the main *Decline* directory. This change is automatic, there is no setup required. You can also use the standard *Mine Solutions* share point system to share configuration files on a network.

Rounding errors in *Point to Point Curve* function have been fixed. This caused minor issues

In some instances the *Specified Path* function could sometimes halt *Surpac*. This issue has been rectified and will no longer occur.

The *Edit Decline Path* function has had a total overhaul. The function had numerous issues and bugs that in instances could cause *Surpac* to crash. The function has been completely re-written and is now far more robust when deciphering existing declines.

All the decline tools are now accessible from a toolbar in *Surpac*. You will need to turn the toolbar on and dock it into your user profile.



## Request for Enhancements

If there are any new features that you would like to see in upcoming versions of *Decline* please email [support@minesolutions.com](mailto:support@minesolutions.com) your requests or telephone David on +618 9312 6158.

*Decline* requires you the users input in order for it to grow and improve into the future. Your comments and suggestions are encouraged and are welcome.