

MSO V2.03

Release Notes

5th February 2014



Version Highlights

1. *MSO V2.03* is compatible with *Surpac V6.5.1*
2. When adding new stations, the database can now be changed if it is different from the default database
3. Station names can now contain spaces
4. Problems processing GPS data have been fixed. Main issue was caused by base station names such as *RTCM-REF 0000*
5. New option to assign points with no string number to a default string
6. New option to assign the actual survey date and time into a point description field
7. Fixed resection crashing problem caused by reference stations being too close or having bad coordinates
8. The input file now has automatic focus when running the download and upload function
9. Fixed issues with the configuration manager and the *Surpac* user defaults system
10. Fixed issues with the point description assignment table in the configuration manager
11. Other minor enhancements and defect fixes.



Important Note on Surpac 64 Bit Compatibly

Please note that *MSO V2.03* and all previous versions **will not function** on the new 64 bit versions of *Surpac*. There are a number of 64 bit compatibility issues which must be addressed. Resources will be dedicated to solving these issues in the coming period.

Note that this does not include 64 bit versions of Microsoft Windows. *MSO* functions correctly on 64 bit Windows running 32 bit versions of *Surpac*.



Recommendations

The following versions of *Surpac* have been tested with *MSO* and appear to be stable;

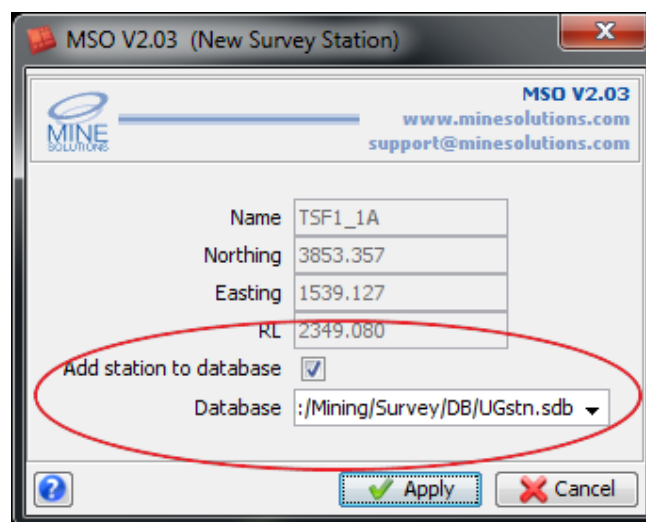
- Surpac 6.3+
- Surpac 6.4+ (32 bit versions only)
- Surpac 6.5+ (32 bit versions only)

It is recommended to gain the full benefit of *MSO V2.03* that you use *Surpac* 6.3 or better



Version Details

A bug introduced into version 2.01 prevented the ability to change the default database when adding new stations while processing a job. This issue has been resolved.



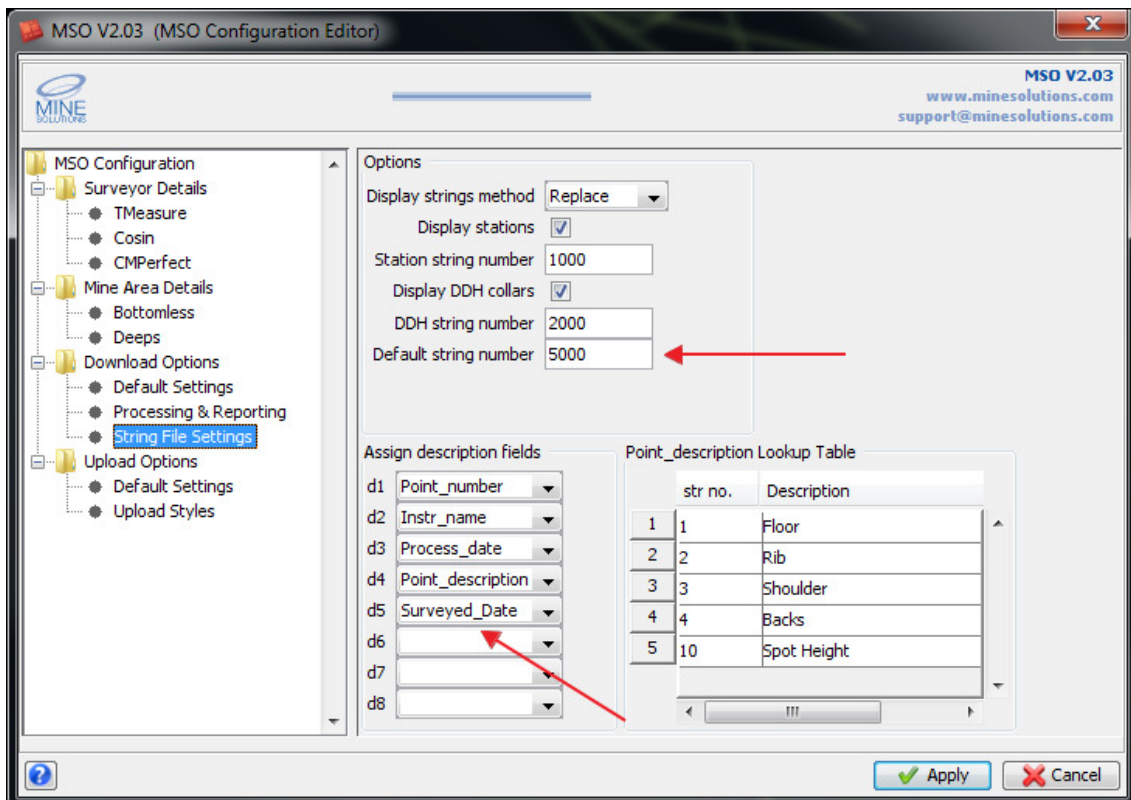


A new option has been added to the Configuration Manager to allow data that has no string number assignment or is assigned to string 0, to be added to a default string. An example of such data is the GPS base station coordinates. This option can be found under the *Download Options* → *String File Settings* pane

A new option has been added to the Configuration Manager to allow the actual survey date and time to be assigned into a point description field. Select Surveyed Date into any of the description field assignment inputs (see below). This option can be found under the *Download Options* → *String File Settings* pane

The point description lookup table would blank out the string number column when selected. This has been rectified.

The Configuration Manager would not save the MSO configuration if the *Surpac Defaults Manager* was set to Last Value for all fields. This issue has been fixed.



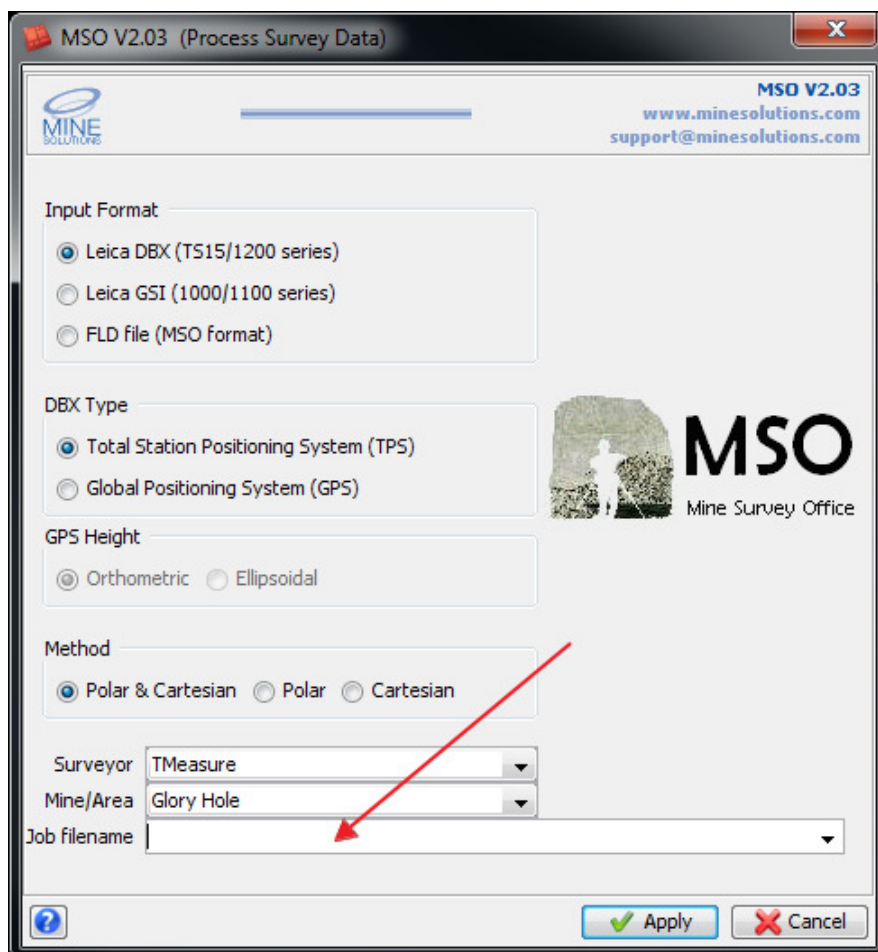


Survey stations may now contain spaces as part of their naming convention, for example *WST 201*. Previously stations names with spaces would cause *MSO* to crash.

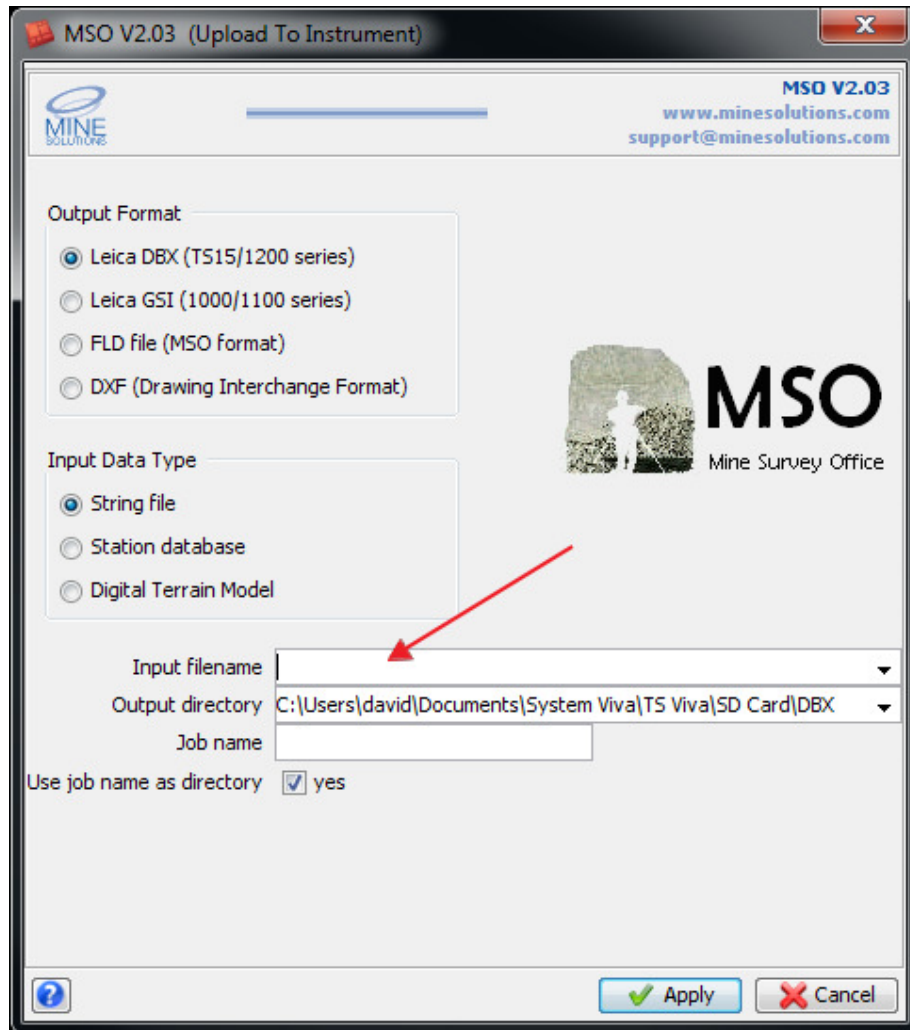
MSO would sometimes crash with a maths error when processing resectioned / forward stations if the the reference stations where to close together. This issue is usually caused by using incorrect station names or entering bad coordinates during processing. This issue is now trapped correctly.

GPS data would sometimes not process in *MSO* due to *RTCM* station names like *RTCM-REF 000*. The space in the name would cause the field file to be incorrectly deciphered and then cause a maths error in later processing.

When downloading a job, the input file field is now automatically has input focus. This is to assist with useability



When uploading a file or stations the input field now automatically has input focus to assist with useability.



For a description of all the new features and defect fixes in the MSO Version 2 stream please see the V2.02 release notes available from

http://www.minesolutions.com/products/mso/MSO_V2.02_ReleaseNotes.pdf



Request for Enhancements

If there are any new features that you would like to see in upcoming versions of MSO please email support@minesolutions.com your requests or telephone David on +618 9312 6158.

Work on the report formats and log files are being anticipated for the next release. If you have ideas on improvements then please make these know. Possible changes are storing the logs directly into the database or directly in to an MS Excel spreadsheet. Reports such as the survey calculation report maybe created as a MS Word document for improved legibility.

Solving the Surpac 64 bit incompatibilities is also on the agenda for next release.

MSO requires you the users input in order for it to grow and improve into the future. Your comments and suggestions are encouraged and are welcome.